

# MADERRA™



For More Info

Contact Us

 [Maderrashop.com](http://Maderrashop.com)

 866-346-8924

# INSTALLATION INSTRUCTIONS.

Please read this entire manual before you begin.

## **⚠️ WARNING!**

This product contains small parts that can be a choking hazard. Do not let children play with any of these small parts! Keep children away from the work area during installation.

## **⚠️ CAUTION!**

This product is intended to be installed by professional installation contractors or persons familiar with the tools and methods required for this installation. If you are not sure about your ability to perform this installation, you must contact a professional. Maderra is not responsible for damage or injury caused by incorrect installation or improper use.

## **⚠️ CAUTION!**

Do not use this product in any way, or for any purpose, that is not specifically described in these instructions. Maderra is not responsible for damage or injury caused by incorrect installation or improper use.

## **⚠️ CAUTION!**

Two people required for some parts of the installation process.



# MADERRA.

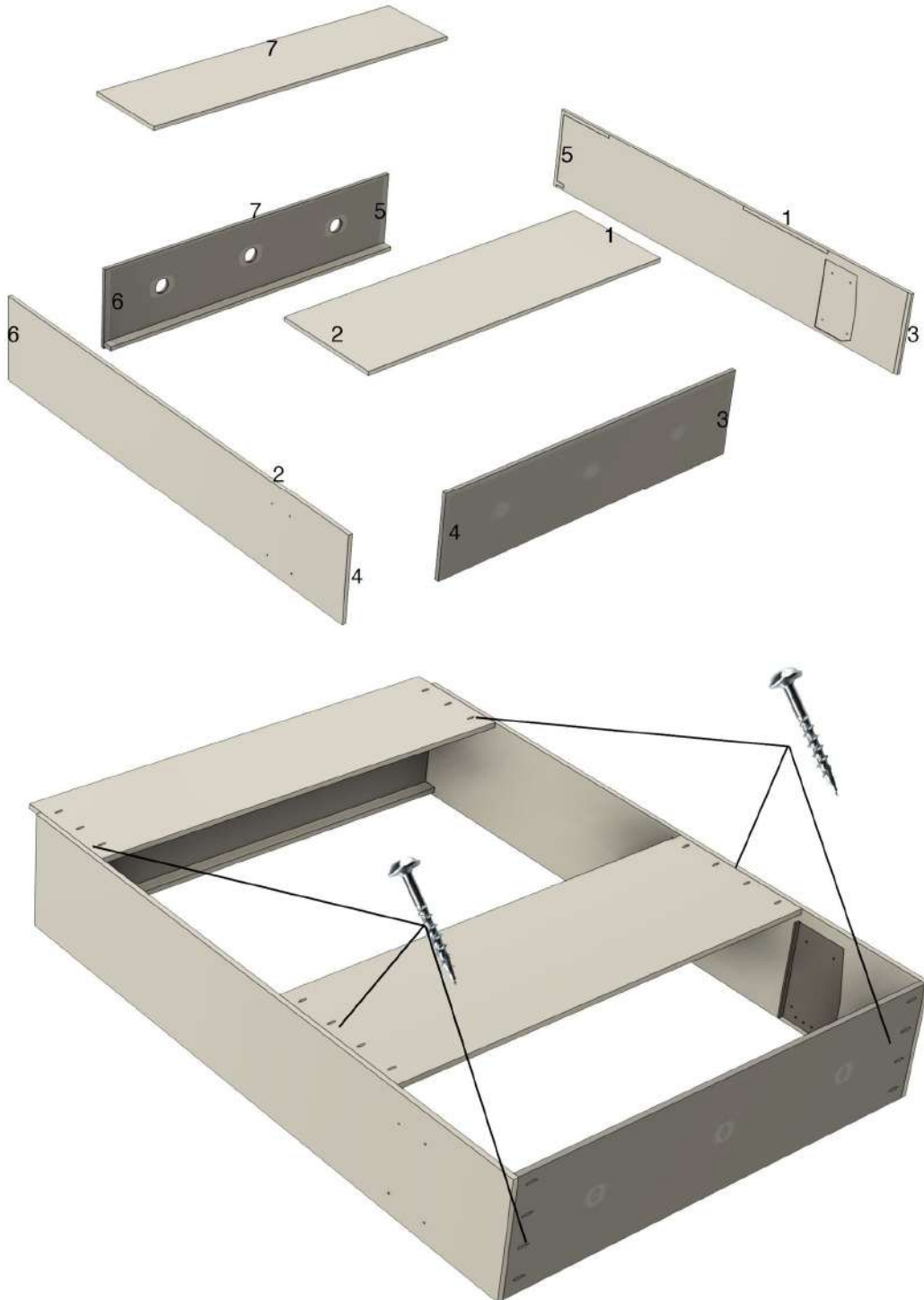
## Assembly of Bed Carcass



# MADERRA.

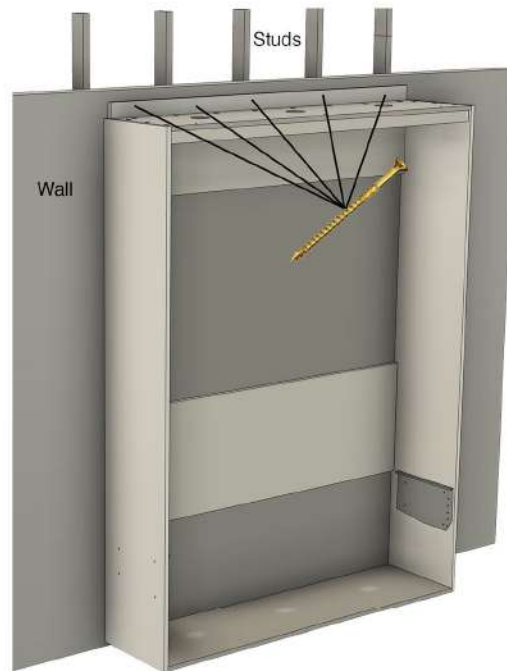
## Step 1: Place the Bed Carcass Facing Down.

Align all parts with their corresponding dado guide and numbers and screw pieces together.



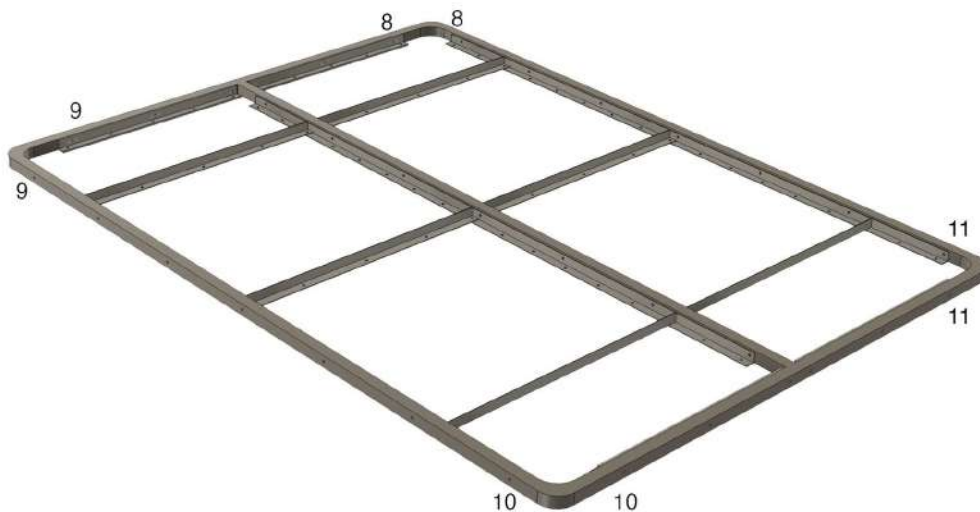
## Step 2: Placing Bed Against Wall Studs

Once you align and screw all parts together. Lift bed carcass against the wall. Find the studs behind your wall and screw the the bed to the studs. Do not screw bed to sheetrock.



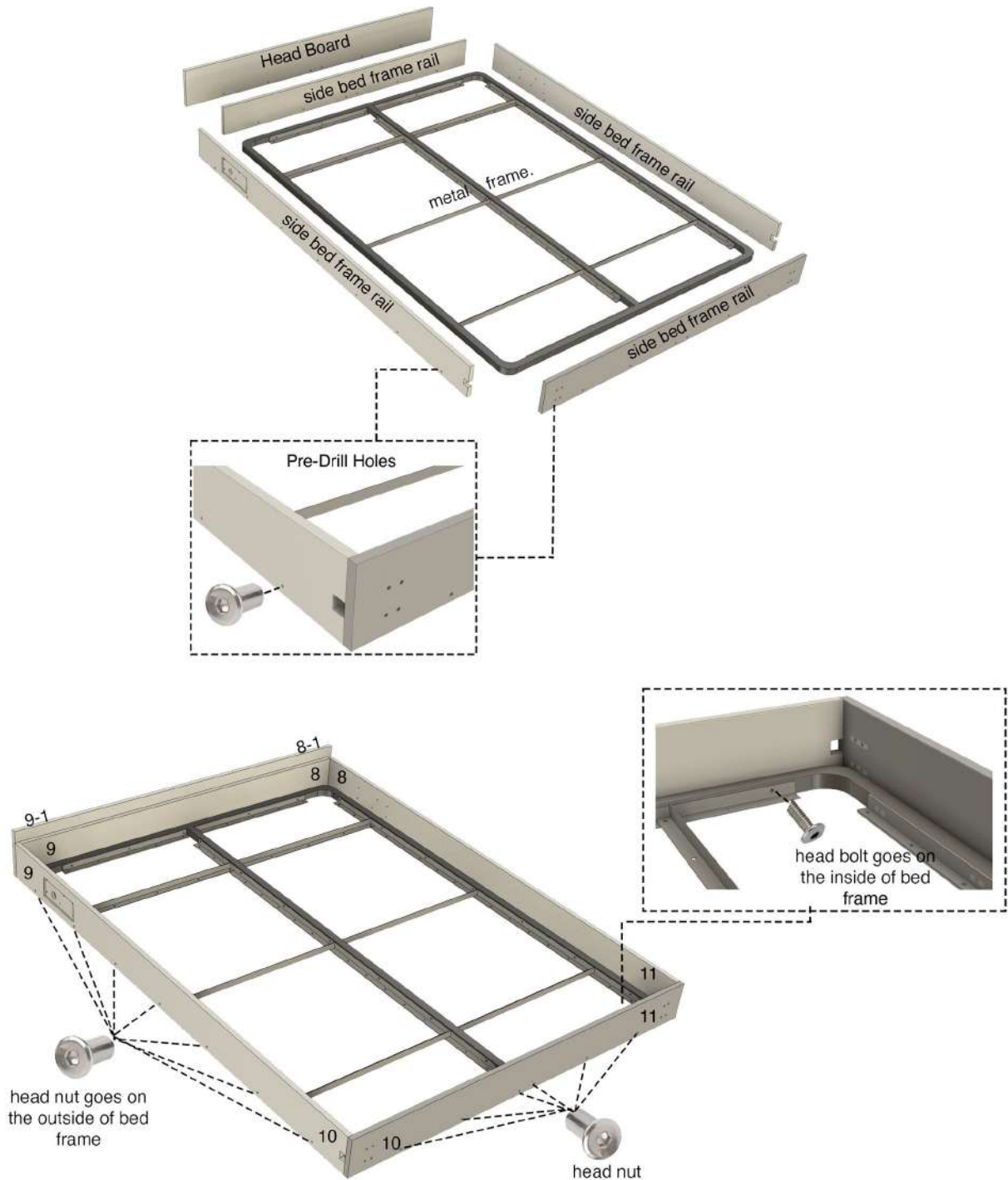
## Step 3: Bed Frame Assembly

Align bed frame with its corresponding numbers and screw pieces together.



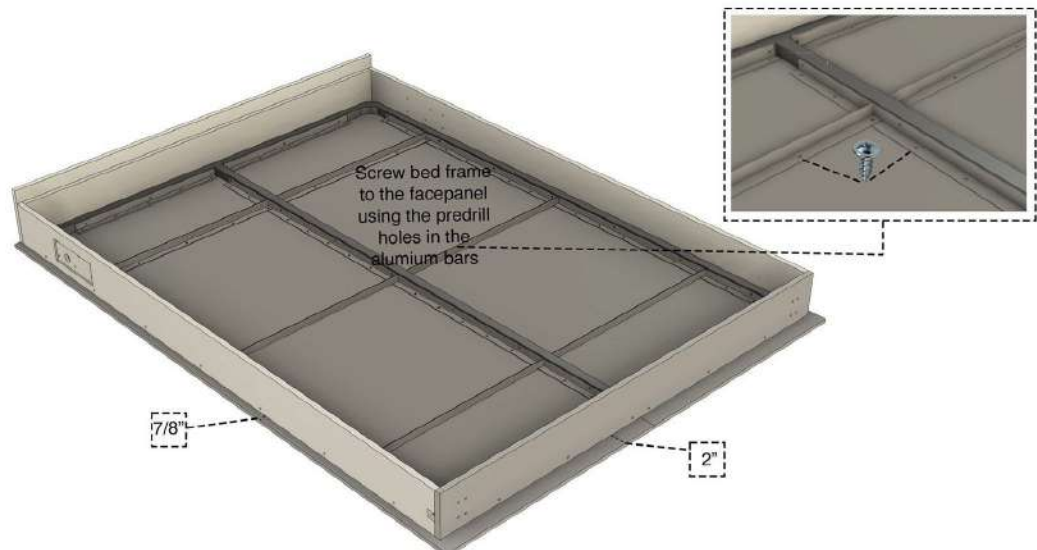
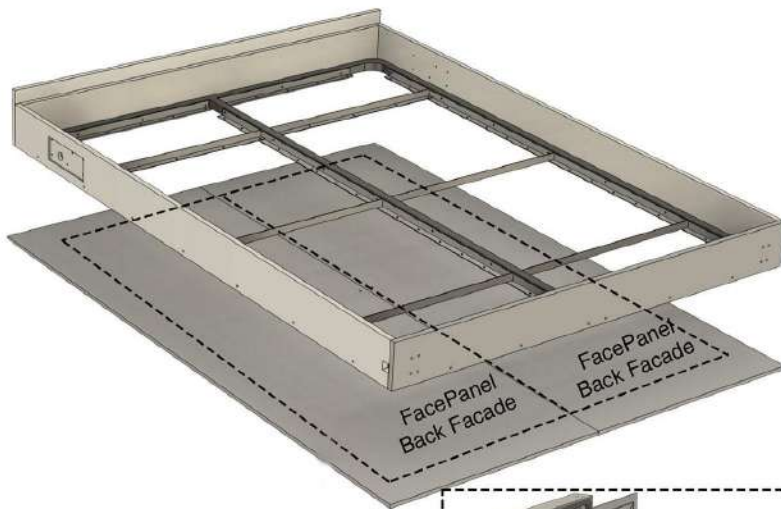
## Step 4: Bed Frame Assembly

Align the side bed frame with its corresponding numbers. Use the predrill holes of the side bed frame along with the metal frame and inster the head nuts screws to secure the side bed frame rail to the metal frame.



## Step 5: Placing Face Panels

Once the bed frame has been completed. Place both face panels on the floor with the front facade facing the floor. Place the bed frame on top of the face panel back facade, and screw the bed frame to the face panels using the provided screws.



# MADERRA.

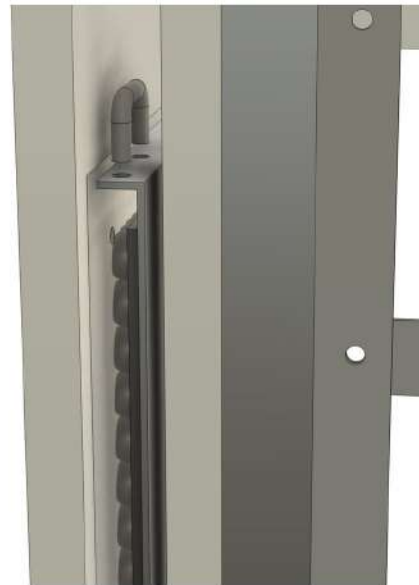
## Step 6 : Insert Bed Frame into Cabinet

With the Help of another adult, lift the bed frame and insert it inside the cabinet mounting slot.



## Step 7 : Insert Locking Pin inside the two holes

Place the locking safety pin inside the two holes.

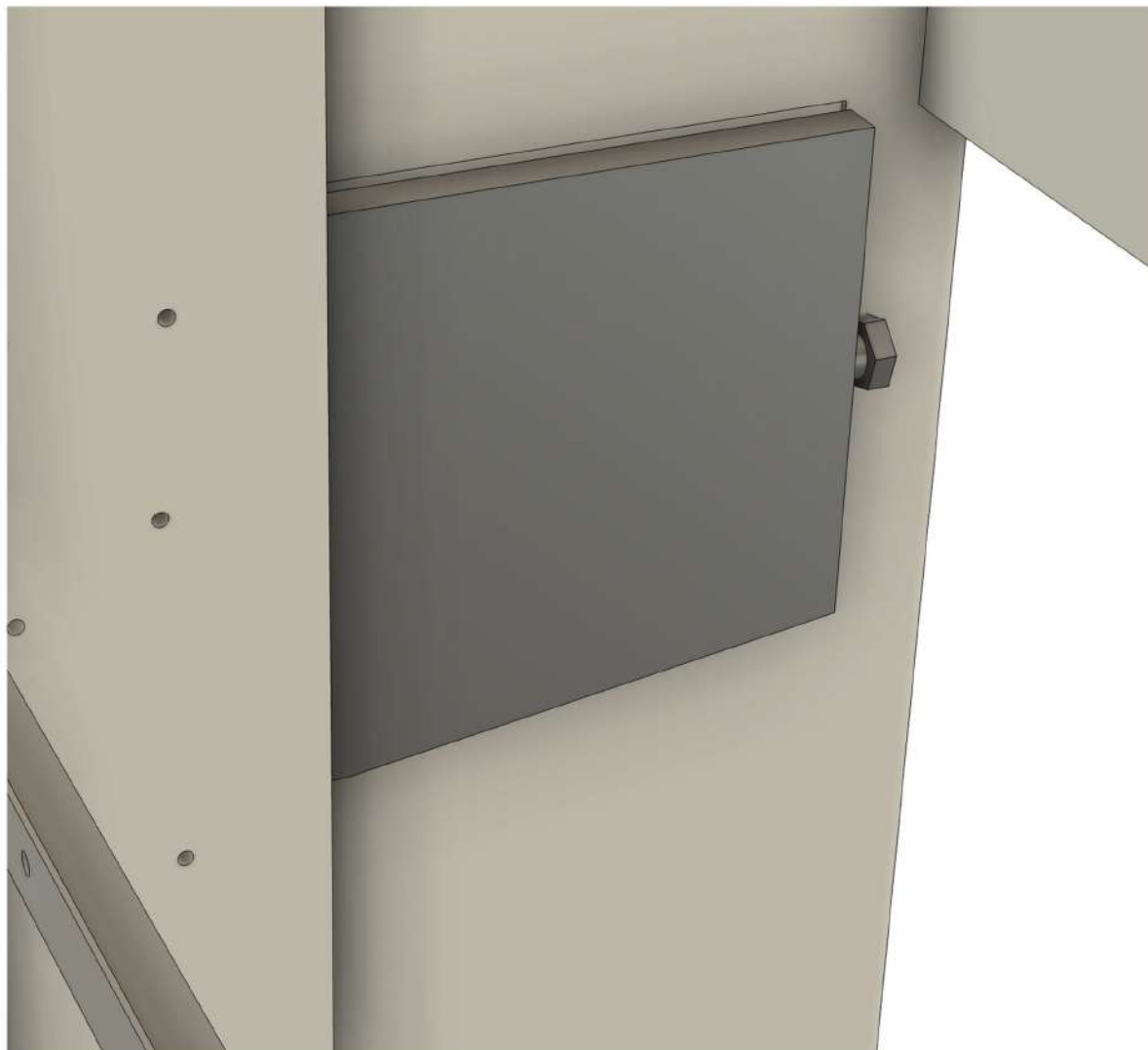




# MADERRA.

## Note :

**Note: If you need to regulate the tension of the bed. Use the tension spring bolt to add or release the spring tension.**



## Step 8: Assembly of Side Cabinets

**Shelves - 0**

**Side Panel - 1R & 1L**

**Upper Shelf - 2**

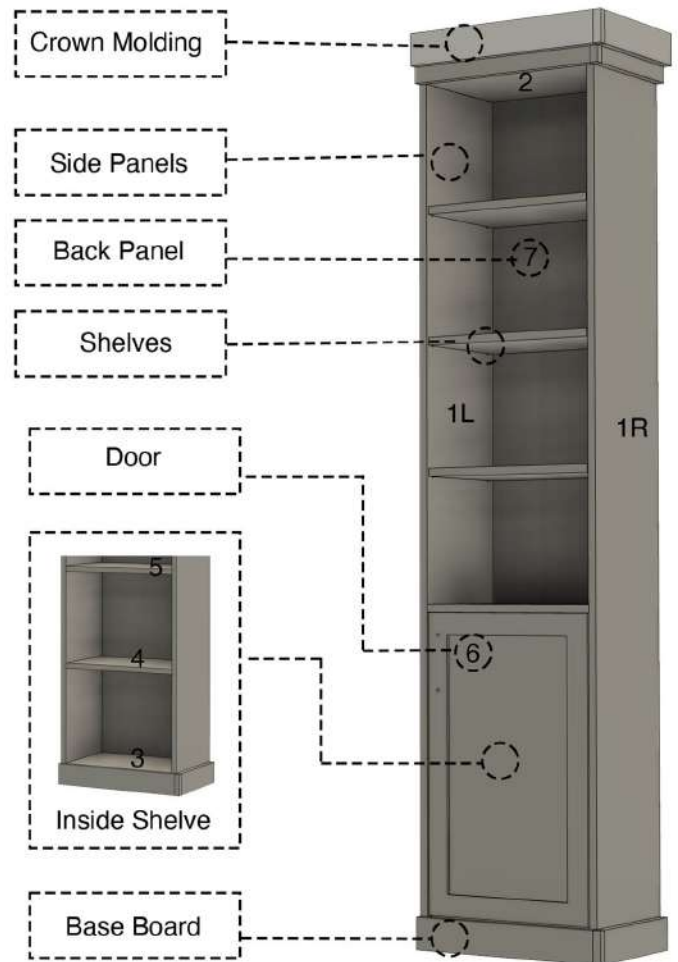
**Lower Shelf - 3**

**Inside Middle Shelf - 4**

**Fix Shelf - 5**

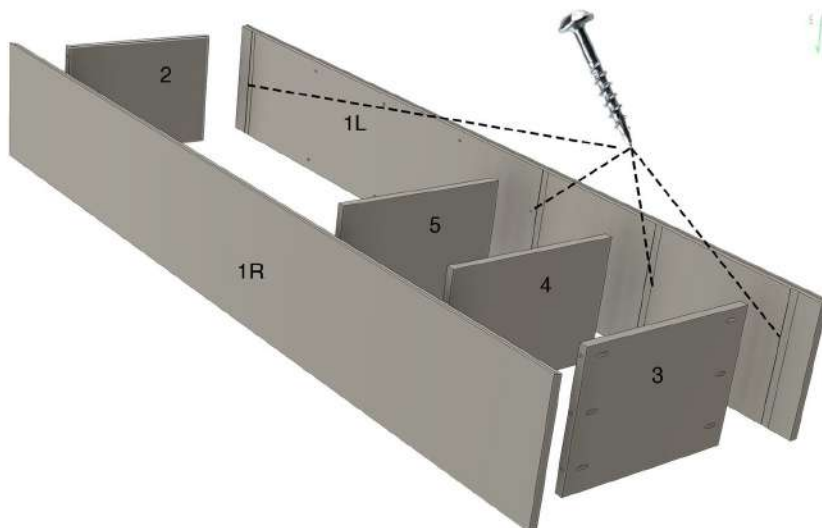
**Door - 6**

**Back Panel - 7**



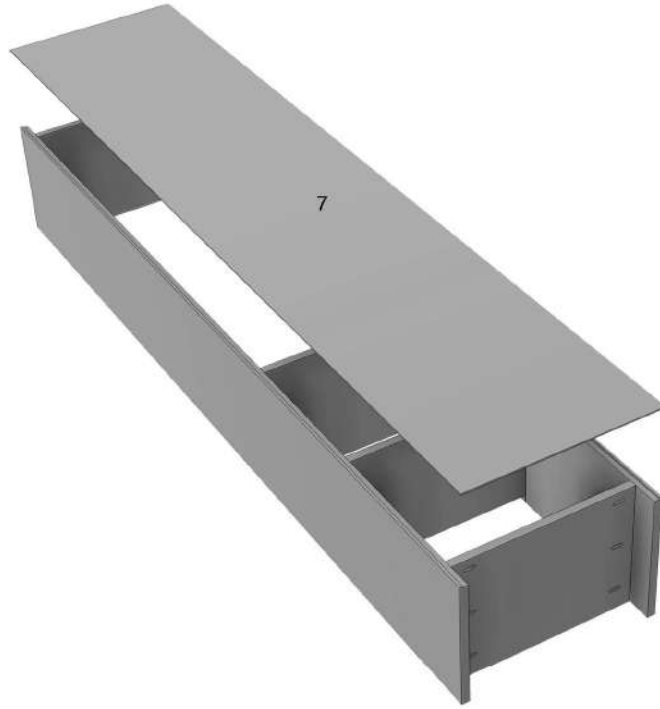
## Step 8: Assembly of Side Cabinets

**Using the predrill pocket holes, screw all parts to the side panels.**



## Step 9: Back Panel

Using the dado guide on the back, place the back panel. Use a staple or nail gun with glue to place the back panel.



## Step 10 : Crown Molding

Attached Crown molding and baseboard to the bookcase

